



THE DUTCH CONNECTION

Ons Museum en Cultureel Centrum



Phew... At last...
It's Happening!

Daar bij die Molen...



We vertellen Ons Verhaal.
Op Onze Plek!

ANCM Presentation - October 2013



To be Frank: Things did not look good for a while in Foxton...

- We wrote to the Mayor - To get Answers for you - At our 2012 ANCM
- And presented the response to you Last October:
\$1.7 million safeguarded in Long Term Plan (Mid 2012). But for the Library only....



25 September 2012

Arjan van der Boon
Chairman of The Dutch Connection
PO Box 60423
Titirangi
Auckland 0642

Dear Arjan

I acknowledge your letter of 17 September 2012 and your clearly articulated background to the relationship between Council and the Dutch Connection with respect to the establishment of a Dutch Museum and Cultural Centre in Foxton.

In its 2012 to 2022 Long Term Plan Council has included the sum of \$1.7m for the construction of a library in Foxton. We are committed to commencing work on this facility during our current financial year which ends 30 June 2013. Council is currently considering a number of options that it has available to it to deliver such facility in a manner that will provide the best economic development investment for Foxton and the wider Horowhenua District.

You have requested Council's views on three particular matters so that you can report to the Annual National Council meeting of the Federation of New Zealand Netherland's Society on 13 October 2012, which we respond to as follows:

126-148 Oxford S
Private Bag

Telephone 06 366
Facsimile 06 366

Email enquiries@horowhenua.govt.nz
www.horowhenua.govt.nz

You have requested Council's views on three particular matters so that you can report to the Annual National Council meeting of the Federation of New Zealand Netherland's Society on 13 October 2012, which we respond to as follows:

1. Council is currently exploring several options with respect to the location of a library/service centre facility within Foxton. The purchase of Mitre 10 is certainly one of those options but with the discussion on purchase we must have concurrent discussions with respect to governance, operation and marketing associated with the building.
2. Another one of the options that Council also has in front of it is the construction of a standalone library/service centre within the Foxton township – albeit the location of this facility would be in close proximity to the Mitre 10 building.
3. Council does not have a large reserve of suitable land within the Foxton township CBD area of a size commensurate with that which we envisage would be required for the TANS facility and associated infrastructure.

As I noted in my recent email to you the major issue that is confronting us at the moment with respect to this project is that of funding. As I stated earlier we have \$1.7m allocated in our Long Term Plan. If we were to vary this amount upwards we are statutory required to undergo a public consultative process. As you can appreciate this can be time consuming and would add some delay to our commencement date. Equally we still need to gain some assurance with respect to the overall funding source for the TANS project.

The most recent business plan requires capital funding for the initial stage in excess of that which will be provided from Council's identified sum of \$1.7m plus the sums of \$1.5m each identified by Dutch Connection Trust and Te Taitoa Maori. There would also be the matter of bridging finance requirements whilst independent fundraising is realised.

We still did not get any more traction with Horowhenua District Council...

What to do? Other options?

In November / December 2012, we started looking at alternatives:

- Online Museum?
- Other location? (Te Awamutu? / Auckland?)
- Collaborate with Villa Dalmatia Society / Chinese / others?

We also kept at it!

- Ongoing discussions with Council.
- And with one Councillor who was right behind the project

**Together with our partners in Te Awahou - Nieuwe Stroom, we decided:
One last ditch effort...**



In the Annual Report, Te Awahou - Nieuwe Stroom for 2012/2013 :

“Faced with the death of the project in December 2012, the Board committed to a final revival. It commissioned and adopted a radically refined concept outline for the project which was endorsed by the key settlers. Its appeal was that it was simply less ambitious and therefore more manageable in the current economic and political climate.”

A Draft Sketch was created - For a more modest Project

- Library / Community Centre / Council facilities
- Dutch Museum
- Maori Arts and Crafts Gallery (Already opened their weaving / carving centre)



Revised costs were calculated.

Funding Sources were identified.

The political game began... (elections due!)

DECISION TIME: COUNCIL MEETING 4 SEPTEMBER - DO OR DIE!



In the meantime... In 2013. We had continued our preparations

Strategic Work

- Lily Frederikse - Senior Curator at the Auckland Museum - Joins the Dutch Connection Trust
- Preparations for a Strategic Plan and Exhibition are under way

Fundraising Preparations

- Evaluate Fundraising options, and choose a Fundraising Professional to work with
- Get funding from Te Papa's Paerangi Services for launch of Fundraising Campaign workshop

Work on a More Cohesive Dutch Community

- Progress work for the Dutch Connection to join the Federation
- Discussion with Ambassador and range of Dutch Groups, at the Residency
- Open new communications with De Molen. Michael Feyen joins the Board of Te Awahou - Nieuwe Stroom. (And now on District Council as well)
- Arjan invited to join the NetherlaNZ Foundation



Council
04 September 2013



Purchase of Mitre 10 for Te Awahou Project

File No.: 13/777

Purpose

This report is prepared to provide Council further information on the Te Awahou Nieuwe Stroom project in Foxton and to provide Councillors with information to allow them to make a decision to purchase the Mitre 10 building in Foxton.

Executive Summary

A business case has been prepared supporting the recommendation that Council proceed with the acquisition of the Mitre 10 building in Foxton.

Once the building has been acquired Council will proceed to develop details drawings in consultation with key stakeholders to include a library, visitor information and service centre functions for Council, meeting rooms and technology. Provision will also be made to include the National Dutch Museum, exhibition space and Iwi gallery, subject to funding from stakeholder groups such as the Dutch Connection Trust and Te Taitoa.

Stage 1 of the project would include the library, visitor information and service centre functions, meeting rooms and technology.

Stage 2 would include landscaping and the exhibition space.

Stage 3 would include the Dutch Museum and Iwi gallery, subject to funding from key stakeholders.

Recommendation

- a. That Report 13/777 on Purchase of Mitre 10 for Te Awahou Project be received.
- b. That this matter or decision be recognised as not significant in terms of s76 of the Local Government Act 2002.
- c. That Council authorises the Chief Executive to commence negotiations to purchase the Mitre 10 building in Foxton from Foxton Hardware Supplies (1984) Limited.



Item 11.3

Council commissioned Brian Elliott from Design Group Stapleton Elliott to prepare concept drawings and cost estimates for the development of the Te Awahou Nieuwe Stroom concept utilising the Mitre 10 building.

The proposed development is divided into 3 stages:

- Stage 1 : Library, visitor information centre, service centre, meeting rooms, technology and display space
- Stage 2 : Landscaping and courtyard
- Stage 3 : Exhibition space, Iwi gallery and Dutch Museum

The estimated costs for each stage if they were constructed separately are:

Stage 1	\$3.296m (including purchase of Mitre 10)
Stage 2	\$0.800m
Stage 3	\$1.600m

\$5.696m (plus GST)

Should the stages be constructed concurrently the estimated cost reduces to \$5.300m

Funding

Based on previous reports to Council regarding funds available for the Te Awahou project, the known for possible funding is:

Stage 1	Council loan (Foxton Library LTP)	\$0.800m
	Sale of existing library	\$0.120m
	Sale of Foxton properties	\$0.400m
	Foxton Beach Freeholding Account (subject to 2014/2015 Annual Plan consultation)	\$0.500m
		<hr/> \$1.820m
Stage 2	Foxton Main Street (LTP 2012-2022)	\$1.200m
		<hr/>
	Total Funding Available	\$3.020m





Media Release

Foxton, 4 October, 2013

Dutch National Museum Gets Home Next to Windmill

Project to Revitalise Foxton Township is Now Under Way

New energy has been blown into the sails of a project to establish a Dutch museum and cultural centre in the heart of Foxton, right next to Dutch windmill *De Molen*.

"Horowhenua District Council has made a momentous decision, by investing in a project that will transform the future of Foxton and also the future of the Dutch community in New Zealand," says Arjan van der Boon, Chairperson of the Dutch Connection Museum Trust. "Now that we are getting a home for our museum for and about the Dutch in New Zealand, we can move full steam ahead with our plans to create *Onze Plek* – Our Place."

Horowhenua District Council recently voted unanimously to move ahead with the purchase of the empty Mitre 10 building to house Foxton's new Culture and Community Centre. The Dutch Connection will take pride of place in the almost 1500m2 building on Main Street in the centre of town.





27 September 2013

Arjan van der Boon
Dutch Connection Trust
Arjan.VanderBoon@manukau.ac.nz

Dear Arjan

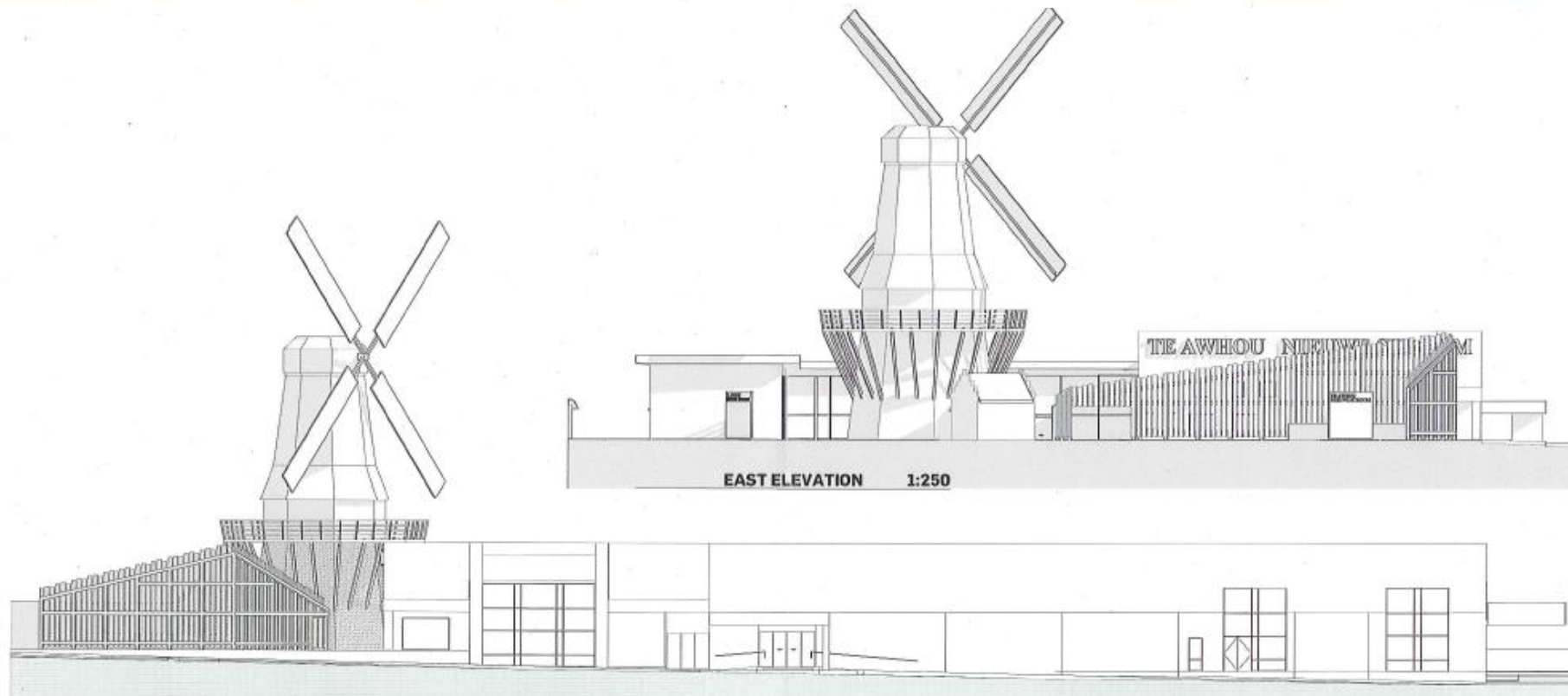
It is with great excitement that I write to you. By now you would have heard the news that Horowhenua District Council has voted unanimously to move ahead with the purchase of the Mitre 10 building in Foxton to house Te Awahou - Foxton's Culture and Community Centre. Council is currently in the process of finalising the purchase of the Mitre 10 building. With this transaction nearly complete, fundraising and consultation on the detailed design of the complex can begin.

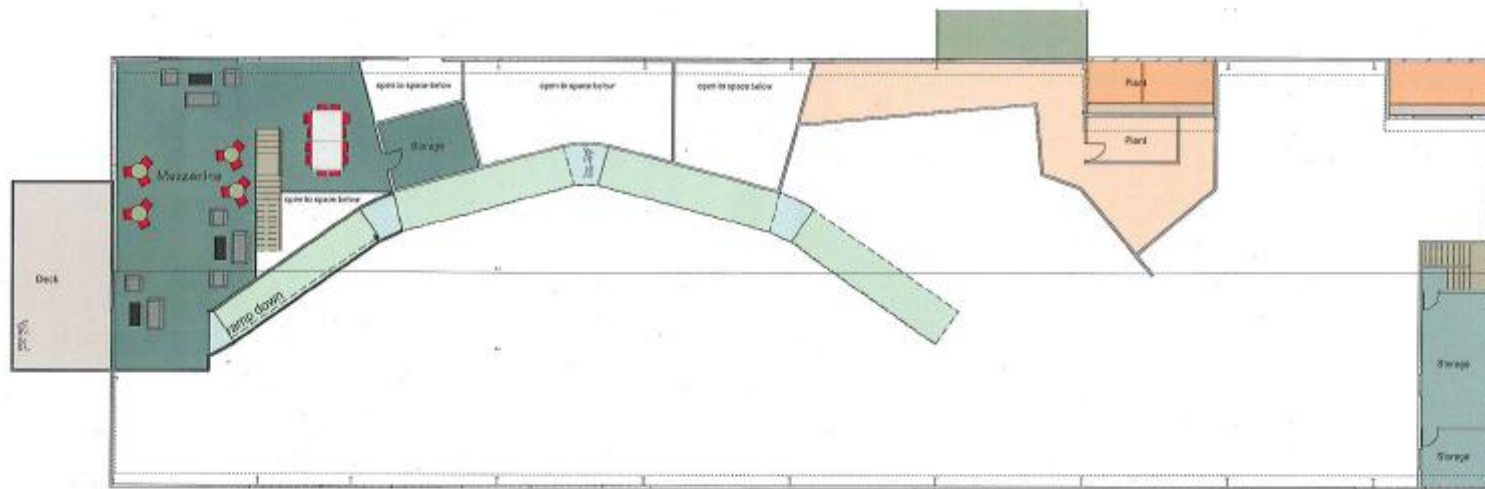
Te Awahou will be developed to provide an integrated cultural, community and service facility. What this facility will look like, its functions and services are for you, the community, to determine.

While the Te Awahou business case sets out a vision for Te Awahou and identifies potential partners, the development of a design brief allows us to develop a practical document. This will reflect the aspirations and requirements of the various project partners and the benefits of working together in one integrated facility.

As an important partner to this project, you and the organisation you represent have been identified as an important stakeholder in assisting Council in developing the design brief. The design brief will inform the development of detailed drawings and final confirmation of project costs. The brief







Proposed Mezzanine Floor 1:250



Proposed Ground Floor 1:250



What Will You Get - Wat Gaan We Doen?

Ons Museum Centrum - The Dutch Connection

2014 - The Beginnings

- Official Opening: Tasman Delfts Blauw Tableau - Unveiled
- Draaiorgel 'De Lieve Stem'
- Perhaps: Art Exhibition: 'Nederlandse Kunst' in New Zealand
- Perhaps: Statue of Abel Tasman (Te Papa)
- Perhaps: Sculpture of Tasman ships (Beehive)



Ons Museum Centrum - The Dutch Connection

2015 to 2017 - Our Exhibitions

- **1. A Long Common History: 370 years of Dutch Connections / Bijna 4 eeuwen contact**
(Incl the story of the NZ-NL Societies, FSN, NetherlaNZ Foundation, Retirement Villages / Huiskamer / Keuken / Scheepshut)
- **2. Our Influence / Onze Invloed: Style / Coffee / Arts / Sports / Science / Agriculture and Horticulture / Building (eg Fonterra / Vogel's / Lockwood / T&T / Rembrandt / Verkerk)**



Ons Museum Centrum - The Dutch Connection

2015 to 2017 - Our Exhibitions

- **3. The Meeting of Two Cultures:** (Governments and Individuals / Culture Shock and Clashes / Discrimination / Identity loss / Homesick and Heimwee / Multimedia room)



The Future - What's Possible?

Three Major Tasks in 2013 / 2014

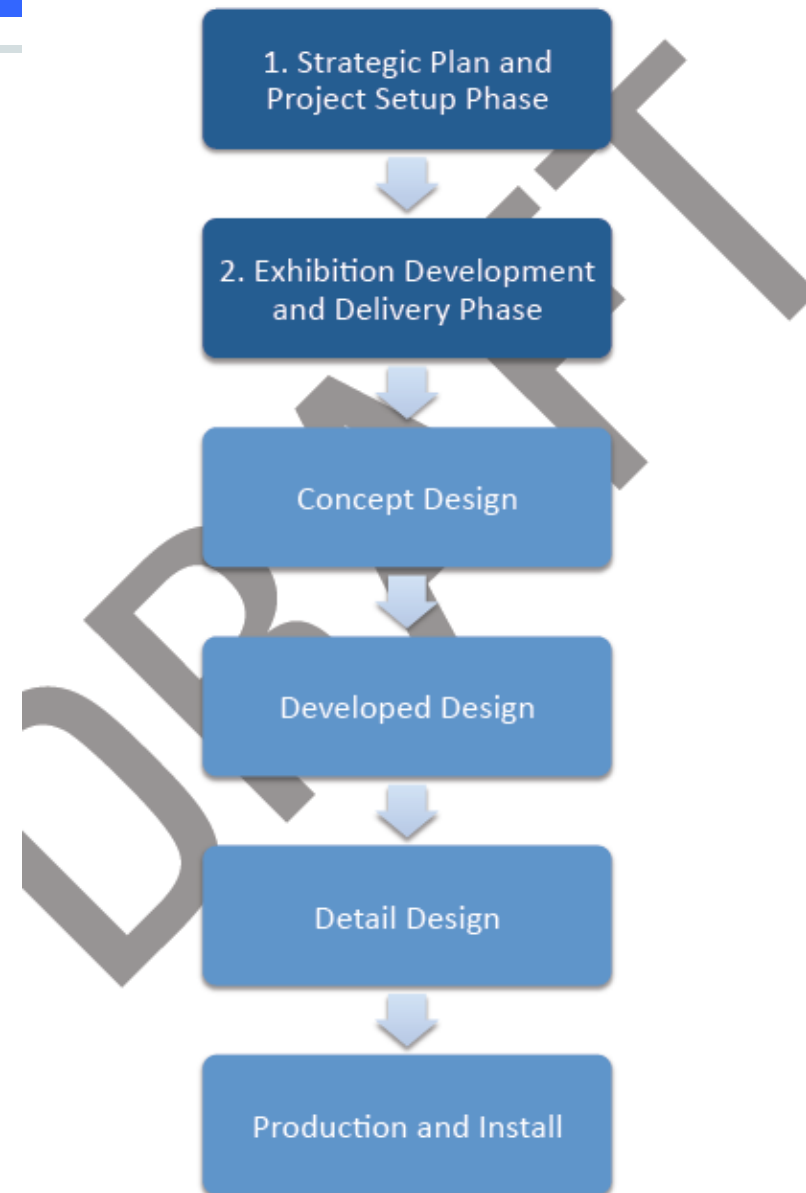
#1 - Participate in Te Awahou - Nieuwe Stroom

- 1. Architectural Design Brief
- 2. Develop the Facility

#2 - Exhibition Development

- 1. Strategic Plan
- 2. Concept Design
- 3. Developed and Detailed Design

Exhibition Development Phases



Three Major Tasks in 2013 / 2014

#3 - Fundraising Campaign

- 1. High Net Worth Individuals
 - Workshop Funded by Te Papa's Paerangi
- 2. Dutch Organisations
 - Thanks over the past year to the Federation! and Waikato!
 - Thanks in the past to Wellington, Palmerston North, Wanganui, NetherlaNZ Foundation
- 3. Dutch Companies
 - KLM approached us spontaneously
- 4. Individuals (Alle kleine beetjes helpen!)
 - Crowd sourcing via Internet
 - Txt-ing (\$3 or \$4)
 - Sponsor Something - Get Something

The Dutch Connection Museum Centre Project

Case Statement



Entrance to Museum - Indicative design (3D Creative)

Discussion Paper: To Research Funding Development.

Feedback / Ideas ?

- We have Local Coordinators in a number of places - Others?
- Names of Wealthy Nederlanders?
- Names of Successful Dutch Artists?
- Other Funding Ideas?

