

THE DOUBLE DUTCH



The Milkmaid (c 1658) painted by Johannes Vermeer

THE NEW ZEALAND NETHERLANDS SOCIETY WELLINGTON INC.

**CLUB HOUSE SITUATED: AVALON HOUSE, 61 TAITA DRIVE,
AVALON, LOWER HUTT**

**POSTAL ADDRESS: P O BOX 30060, LOWER HUTT 5040, NEW ZEALAND.
TELEPHONE (04) 567 3573**

Website: www.netherlands-societies.co.nz then click on "Wellington" in the panel on the side of the Federation of New Zealand Netherlands Societies home page. There are 2 pages of information about our club and you can access recent issues of The Double Dutch by opening "Newsletters" in the same panel.

FEBRUARY - MARCH 2012

ISSUE 2012/01

COMMITTEE

President.....	Mr Kees Dorresteijn	938 2378 (021 685 649)
Vice President.....	Mrs Marianne Iwanek	972 7460
Secretary.....	Mrs Dawn Dorresteijn	938 2378 (027 669 4777)
Assistant/Minute Secretary	Mr Peter Koedijk	526 8867 (021 065 5470)
Treasurer	Mrs Mary Boonen.....	232 8621
Assistant Treasurer	Mrs Ann Beyk	567 8575
Editor Double Dutch.....	Mrs Dawn Dorresteijn	938 2378 (027 669 4777)
	E-mail.....	cd.dorresteijn@paradise.net.nz
Committee Members.....	Mrs Anna Heythuysen	563 6026
	Mr Pieter Koning	589 2612
	Mr George Mulder.....	528 6387
	Mr Bill Newhouse	528 5480
	Mr Theo Kooistra	383 8449
	Mrs Ina Kooistra.....	383 8449
	Mr Nic de Graauw	972 4549
	Mrs Jo de Graauw	972 4549

(The country code for New Zealand is 0064 and the area code for Wellington is 04 e.g, when calling Kees and Dawn from overseas: 0064 4 938 2378 but please check the time zone – the middle of the day in the Netherlands is the middle of the night in NZ!)

PLEASE SEND TYPING AND NEWS FOR THE NEXT ISSUE OF THE DOUBLE DUTCH TO DAWN DORRESTEIJN, NO LATER THAN THE CLOSING DATE OF 20TH MARCH 2012

ACTIVITY ORGANISERS

Klaverjas, Tuesday Mornings.....	Mrs Ann Beyk	567 8575
Childrens Dancing Lessons	Mrs Carolina van Rooy.....	528 8434 (021 217 9849)
Wednesday Coffee Mornings	Mrs Marianne Iwanek	972 7460
Librarian.....	Mrs Marianne Iwanek.....	972 7460
Dutch Costumes.....	Mrs Anne Beyk.....	567 8575
Lawns and gardens	Mr Kees Dorresteijn	938 2378 (021 685 649)
Friendly Support Network.....	Mr Kees Dorresteijn	938 2378 (021 685 649)

CLUB ACTIVITIES – AVALON HOUSE

Coffee Mornings	1 st /3 rd	Wed	10.00am	Klaverjassen	Tuesday	10.00am
Film Mornings	4 th	Wed	10.00am	Instuif	Sunday	2.00pm

HIRE OF CLUB ROOMS

The Clubrooms are available for our members to hire for functions such as birthday parties, wedding anniversaries, etc. The Hire charges are: 8.00am to 12 Noon \$40.00; 12 Noon to 6.00pm \$60.00; Evenings 6.00pm onwards \$70.00; All Day \$120.00. Please contact Kees or Dawn Dorresteijn on 938 2378.

MEMBERSHIP (At present 157 households)

Only **\$35.00** per Household including children under the age of 16 years.

Our Financial Year starts 1 April and ends 31 March. ***Please assist our Volunteer Committee by paying fees promptly.*** Affiliation fees are paid to the Federation in July and we receive copies of De Schakel according to how many affiliation fees are paid. Therefore, there will be no copies of The Double Dutch or De Schakel to any unpaid members after July.

FROM THE PRESIDENT

The last events of the year went all according to plan. On the 4th of December we had our St Nicolaas and his black Peters arriving at Avalon Park. A big thank you for all the ones who helped organising this event and also a thank you to the Embassy for lending us again their beautiful St Nic. and black Peters costumes. The Christmas service in the Knox church was another pleasant evening. This is the only event which is still done in Dutch and enjoyed by many of our members, with after the church service a nice cup of coffee and the traditional Dutch Kerstbrood. About 17 of us saw the New Year in at our clubhouse.

It has not been a happy season for all of our members, first Cees Bosch passed away the day after Boxing day 2011. Cees and Ann have been long time members of our club and Cees also served on the committee for a couple of years. On the 10th January 2012, Jan Nobelen died after a long illness. Jan will still be remembered for the painting outside our clubhouse. I wish both families strength in these difficult times.

Our Society and some other members are in the process with the Embassy to organise next Queen's day celebrations (30 April 2012). The full announcements will be in the next Schakel and the Double Dutch magazines. I am looking forward to another successful year with first our Barbeque party on the Sunday 26th February 2012. Look under coming events. Please come along, we do like your company and "De meer zielen de meer vreugd"

Kees Dorresteijn

FROM THE EDITOR AND SECRETARY

Now that the festive season is over, we are back to featuring famous paintings from Dutch Painters on the front cover. The August/September 2011 issue had "The Anatomy Lesson of Dr Nicolaes Tulp" by Rembrandt van Rijn and the October/November 2011 issue had "The Physician's Visit" by Jan Steen. We now get away medical paintings to a more domestic scene with Johannes Vermeer.

Johannes, Jan or Johan Vermeer baptized in Delft on 31 October 1632 as **Joannis**, and buried in the same city under the name Jan on 15 December 1675, was a Dutch painter who specialized in exquisite, domestic interior scenes of middle class life. Vermeer was a moderately successful provincial genre painter in his lifetime. He seems never to have been particularly wealthy, leaving his wife and children in debt at his death, perhaps because he produced relatively few paintings.

Vermeer worked slowly and with great care, using bright colours and sometimes expensive pigments, with a preference for cornflower blue and yellow. He is particularly renowned for his masterly treatment and use of light in his work.

Vermeer painted mostly domestic interior scenes. Almost all his paintings are apparently set in two smallish rooms in his house in Delft; they show the same furniture and decorations in various arrangements and they often portray the same people, mostly women.

Dawn Dorresteijn

FRIENDLY SUPPORT NETWORK

The Friendly Support Network is an organization, run by voluntary workers who are trained to give help and support in situations of need or stress to people of mainly Dutch descent. It supplements the work of New Zealand welfare and similar organizations but mainly for the Dutch community. Networks are based in most major centres of population. Anyone in need of help, support, or just wants to talk, there is a network near you (see contact phone numbers below). The assistance is generally more of moral support rather than a financial nature.

Friendly Support Network is special opgericht voor mensen met een Nederlandse achtergrond die problemen hebben. Er zijn contacten over het hele land. Als we iemand ergens mee kunnen helpen, bel dan een van de nummers hieronder:

Upper Hutt: 526 8867; 526 6356; 528 2236.

Stokes Valley: 971 7571

Lower Hutt: 938 2378; 972 7460; 565 0801.

Wellington: 934 1936; 385 6268; 971 3744.

Whitby/Johnsonville: 234 7374.

Waikanae/Paraparaumu: 298 4244; 904 0400.

Wainuiomata: 972 6190.

On 15th February 2012 after our first coffee morning of the year we are having (1PM) our first FSN Meeting.

Kees Dorresteijn, Co-ordinator, Telephone/Fax: (04) 938 2378. E-mail: cd.dorresteijn@paradise.net.nz

IMPORTANT DATES TO REMEMBER
(MARK IN YOUR DIARY OR ON YOUR CALENDAR)

SUNDAY AFTERNOONS

There are less members attending than in the past. Remember, if you don't use it, you could lose it. Come along to enjoy the company of others and if you wish, play a game Pool! Look at DVD's or BVNTV on our big screen above the fireplace, where an electric heater has been installed with a flickering flame. We also have a heat pump. Marianne Iwanek has been sorting out the library so there are lots of books in both Dutch and English that you may borrow. A print-out of the weekly news from The Netherlands is in the club rooms, as will be from now on, the two lever-arch folders of De Schakel that will otherwise only be available on the Federation website.

COFFEE MORNINGS

10.00 A.M. ON THE FIRST AND THIRD WEDNESDAYS OF THE MONTH.

The first coffee morning in 2012 will be on the 15th of February which is the 3rd Wednesday of the month. Phone our convener, Marianne Iwanek on 972 7460 to offer your services in running the coffee morning. Even if you are not on duty, sometimes those who are need a helping hand with collecting dirty dishes, etc. All offers gratefully accepted!

FILM SESSIONS AT CLUB ROOMS ON THE 4TH WEDNESDAY MORNING OF THE MONTH

Now that the summer months have arrived, the Film Sessions will be suspended until April.

CLUB BARBECUE AT THE CLUB ROOMS 4.00PM SUNDAY 26TH FEBRUARY 2012

The club rooms will be open as usual from 2.00pm. If the weather is fine, we will put tables and chairs outside on the back lawn so bring your sun umbrellas and stands. Bring your salads and desserts and also bring your meat for the barbecue and members of the committee will cook it for you.



EASTER EGG HUNT 2.00PM SUNDAY 1ST APRIL 2012

We usually hold other children's games as well which they find a lot of fun – also for the adults looking on or even joining in. We will, yet again, cook croquettes and have a sausage sizzle. \$3.00 per child, - please book with Dawn or Kees because it is important to know how many to cater for.



PROPOSED DUTCH MUSEUM TO BE BUILT IN FOXTON

Contact Arjan van der Boon, or The Dutch Connection on (09) 520 0045 or 07 823 3407. You can also E-mail info@dutchconnection.org.nz, look up the website: www.dutchconnection.org.nz or post to The Dutch Connection, P O Box 60423, Titirangi, Auckland, 0604. Don't throw out any of your treasures that you brought from the Netherlands with you. Contact Arjan to see if they would be interested in what you have for the proposed museum.

DUTCH PLAYGROUP IN OUR CLUB ROOMS

This is held once a fortnight on a Friday, from 10.00am to 12 noon. If you would like to mix with other young Dutch parents and their pre-school children, e-mail Ellen van Dijken on ellenvand@paradise.net.nz or phone her on (04) 565 1831. Because there are young children running around outside, the gates must be kept shut at all times and ***absolutely no cars on the property, no matter what the reason – it is too dangerous.***

THE NETHERLANDS EMBASSY



Please visit www.netherlandsembassy.co.nz regularly to be informed on the latest interesting Dutch-New Zealand matters. If you require any further information, please contact: Christine Hofkens, Cultural and Trade Officer, Royal Netherlands Embassy, PO Box 840, Wellington 6140, Telephone 04 471 6396, Fax 04 471 2923, e-mail: WEL@minbuza.nl

NEWS FROM THE FEDERATION OF NEW ZEALAND NETHERLANDS SOCIETIES.
The editor of De Schakel & webmaster for the website is Reina Vijelaar (03) 689 7380.

I print off two copies of each issue of De Schakel and place them in a lever-arch folder in our club rooms so that those who do not have access to the internet can read it. For the benefit of those who neither have access to the internet nor visit our club rooms, I will also use information from it that I deem necessary to place in the Double Dutch – if I have room. Kees Dorresteyn continues his story in the October/November 2011 issue of De Schakel which will

also be published in this issue of The Double Dutch because we felt it should be available to our members both online and also those who have no access to the internet.

For those who have access to the internet, information about our club and a few previous issues of the Double Dutch are available on the Federation website: www.netherlands-societies.co.nz then choose Wellington from the list of Netherlands Societies affiliated to the Federation. There are two pages of information on our club (click “next” at the bottom of the first page to access the second page). There is now a new method on the website to obtain the copies of De Schakel, The Double Dutch and newsletters from other Dutch Club in New Zealand: choose the Newsletter option in the panel on the left side of the homepage from the Federation Website. The history of our club is also on the Newsletters tab.

For those who do not have access to the internet, the Federation executives are as follows:

Kees Dorresteyn, President, phone (04) 938 2378.

Elly Zentveld, Secretary, phone (06) 354 6644

Albert Ruijne, Vice President, NI, (09) 940 9475

Elly van de Gronde, Vice President, SI, (03) 348 6380

Tonny van der Storm, Treasurer, (03) 465 7048

(Editor's note: see photo of Federation executives on page 11)

Dawn Dorresteyn

50 YEARS IN NEW ZEALAND, PART 6 IN THE FEBRUARY/MARCH ISSUE OF DE SCHAKEL, BY KEES DORRESTEIJN.

The wedding date was set for the 27th June 1964. This was going to be a busy time for Dawn to organize this important day. She could not count on any help from her future mother-in-law in the Netherlands, who she had never met. Also,



since her own parents were living nearly 700 km from Carterton, it was going to be difficult to expect much of an input from them in organising our wedding day. Fortunately Dawn was well capable to arrange everything in the 5 months to the wedding day. The invitations to family and friends, the church, the minister, the venue for the wedding party, the photographer and of course the place for our honeymoon. Her parents had promised to pay for their daughters' wedding and for their sons' 21st birthday party, so that was one thing less to worry about. I had no family in New Zealand, but I could invite the same amount of guests to our wedding as Dawn had on her invitation list. There was of course the family of the 5 B brothers and I had made quite a few friends in my short time in New Zealand. Then again I could invite the whole Featherston football team!! Dawn had with her family and friends well over 50 people on her list, but I decided to just keep it to my friends. There were a few football buddies and I asked my scrum mate to be my best man.

Before our wedding one of the B brothers got married, the one I went to the South Island with. I was his best man at his wedding. I met up with a couple who had a double milk round in Lower Hutt with a partner and one of the two partners was planning to go with his wife to the Netherlands and he was looking for a person to take his place while he and his wife were going on this long vacation. They would be away for about 4 months; over two months would be taken up on the boat trip from New Zealand to the Netherlands and back. It sounded interesting to me, the milk delivery proposition. His partner, who was not married, had a small Bach in Silverstream and he had just built a new one bedroom place for himself on

the same property. I could live in that empty Bach until I was married and even after our wedding we could stay as long as we liked.

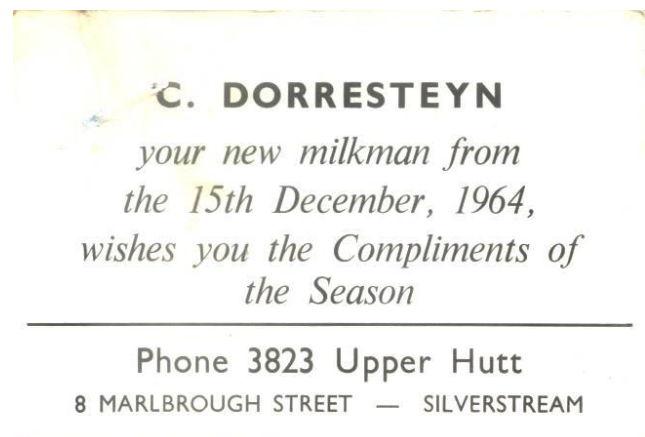
Dawn was not as keen as me on that idea, because it was right in the middle of our wedding preparations and milk delivery was a 7 days a week job and in the very early hours of the day.

After a few meetings it was decided to go ahead with this milk delivery plan. One big stumbling block was our wedding plans, because we could not go on a long honeymoon. We finished up having only a couple of days at the beach in Raumati South. The son of the people who were going overseas was able to help out on our couple of days

away. I thought the early morning milk delivery system in New Zealand was a marvellous idea. There was no traffic to deal with and the customers would put out, on the night before, their required amount of empty milk bottles with tokens as payment in the milk compartment of their letter box. In the morning the people would have their fresh milk at the gate and also bread was delivered in the early hours and of course the newspaper. All this was before the days before some people did not fridges and deep freezers and has disappeared over the years, first the bread rounds and later the milk rounds. The newspaper is all what is left in the early hour's delivery.

It was a beautiful clear winter's day on our wedding day. Everything went without a hitch. After the wedding service in the church, we had our reception in a hall in Carterton. After the reception quite a few of us went to Dawn's auntie's place where Dawn and I first met. Dawn got changed out of her wedding dress into her going away outfit. A few of the blokes were watching us, because it was not unusual to play a trick on the bridal couple. The trick was to stop their going-away car and paint "Just married all over the windows and attach empty cans on the rear bumper. We were well aware of this, that's why Dawn's father and her uncle had hidden our car. We even did not know where our car was. It was arranged that when some people were leaving and while we were saying the good byes outside them, we would hop in Dawn's father's car and he would take us where our car was parked up. Another way to get away from the pranksters was to travel in someone else's car along the railway line and between the railway crossings the bridal couple would cross the railway line on foot and hop in their going away car, which would have been parked on the other side of the railway line. We had a lovely weekend at the beach and on the Tuesday after the Saturday wedding, it was back to an early morning start, delivering milk. It was around that time we decided to use some of my overseas funds to get a new car. We decided to stick with a Ford model, because we had a good run with our Ford Consul, which had by that time 100,000 miles showing on the clock. Our new car was going to be a Ford Cortina. The total cost was one thousand pounds, inclusive of extras, like under sealing, radio and heater. They were extras those days and one had to run in a new car, not faster than 50 miles per hour, the first 1000 miles. The new car had to have an oil change after the first 500 miles and a complete check over by a qualified mechanic.

After about 5 months of doing the milk delivery, the person whose place I had filled came back from his overseas trip, but was laid up with terrible back pain and my milk delivery job was extended by at least another month. When he was able to go back to work, I was able to go back to my previous employer from Carterton and fortunately the job was in Stokes Valley (not far from where we lived), building a new bridge at the entrance of the valley.



I also decided to apply to buy my own milk round and at the end of November I was granted permission to purchase my own milk round, which was around Seaview and Point Howard (towards Eastbourne from Lower Hutt.) There was a lot of industry in that area, like Balm Paint (Dulux), Ajax, Southward Engineering, Feltex Carpet, the assembly plant of Ford Motor Company and many more industrial companies. There was a lot of bulk delivery during the week days, but it made it easy for me on the weekends when the factories were closed. The truck which was part of the purchase of the round was from another area and therefore too small to carry the big loads during the week days. I found that out the first day when I collected the stack of milk which was put out for me on the milk factory landing. Half way through loading the milk on

the little 28cwt Commer truck I could see that the tyres would not take the weight and I decided to take half the load with me and come back later to collect the rest.

My first job on that day after finishing my milk delivery was to get 2 new tyres for the back and put plenty of air in them to handle the weight. I also had to adjust the head lights, because the weight on the back of the truck made the lights shine at the top of the lamp posts. I must say it made the steering easy, with the front nearly lifting off the ground. When I had to go with the truck for the first test to renew the certificate of fitness, the inspector was at a loss when he checked the lights as to how I could see with the lights pointing straight down to the road, even on full beam. I made sure at the next inspection that I had readjusted the lights to a normal height without the big load. This was going to be my first Christmas that I had to work; milk delivery was 7 days a week, no exceptions, Christmas day, Boxing Day, New Years day and of course every Sunday. It was three years before I had my first day off. Christmas day was always a fun day because many customers would leave some Christmas cheer out for the milkman with their Christmas milk requirements. This was the only day Dawn liked to come with me. Because I started to deliver at about 3 o'clock in the morning and household delivery had to be finished by 8 o'clock, I have never met many of my customers; only at the end of my delivery round I would come across the end of the round customers. Some of my experiences during my time as a milkman and the tough financial start of the milk delivery business will be revealed in part 7 of my story.

To be continued in the April - May 2012 issue.

Editor's note: please contact Dawn on 938 2378 if you would like to tell your story in the Double Dutch.

**REPORT FROM THE WELLINGTON NETHERLANDS SOCIETY
IN THE FEBRUARY/MARCH 2012 ISSUE OF DE SCHAKEL – BY DAWN DORRESTEIJN**

It's a long time ago that I sent in an article for De Schakel, mainly because all our club news in The Double Dutch is available for those on e-mail to access on the New Zealand Netherlands Society website but also I am busy at the same time writing The Double Dutch. However, I thought it was time that those who are not on e-mail get to hear what we have been up to over the last year. I presented some of the following news at the Annual National Council Meeting in Palmerston North in November 2011.

At the moment we have 157 households on our membership list – which includes 1 or more people per household. Over the last year a few of our members have passed away and we also have had some new ones.

With regards to our regular activities, our coffee mornings on the first and third Wednesdays of the month are still very popular with most members staying for a lunch of soup, filled bread rolls, croquettes and cake. Some buy wine, beer or some other drink to help wash it down – but they have to buy it before lunch is served otherwise it is too busy in the kitchen dealing with the food and the drinks. Sunday afternoon is still reasonably popular and quite a few turn up for the film mornings on the fourth Wednesday of the month held in the cooler months of autumn, winter and spring. Friday club night has now been cancelled due to lack of patronage. A Dutch Playgroup uses our club rooms from 10.00am until 12 noon once a fortnight on a Friday. There are quite a lot of babies and preschoolers in the group and a lot of them live on hills so they love to race around on their bikes on the flat land at our club. They also now have a covered sandpit in a sheltered corner of the back yard. The people running the Klaverjas have cancelled their Monday night club, due to lack of players (most older people do not want to drive at night) but their Tuesday morning club is doing well. They organised the Federation Cup Klaverjas Competition on Queen's Birthday in June 2011 and participated in the Federation Ring-in Klaverjas Competition.

We did not organise the Saint Nicolaas event of December 2010 because on the same weekend the Dutch Language School was organising their event and the Dutch Connection was organising one in Foxton. Almost all of the children who have attended our event in the last few years were not members of our club. Then, at the eleventh hour, the Foxton event was cancelled but it was too late for us to organise our own event. For December 2011, we got together with the Dutch Language School and the Dutch Playgroup and they were responsible for organising and running the most of the event for Sunday 4th of December, using our club rooms to prepare St Nick and the Black Peters. They were then sneaked on to the Lion's railway in Avalon Park in which our club rooms are situated and did a circuit of the track before going into the Avalon Park Pavilion to meet the children. Afterwards, those who wanted to walked the few metres from the Pavilion to our club rooms for refreshments.

One of the most popular events that we organise is the Christmas Service in the Knox Church in Lower Hutt. The whole service is conducted in Dutch and afterwards, in the church hall, we have the traditional Almond Fruit Loaf with fruit juice (no alcohol allowed on the church property) tea and coffee.

We celebrate New Year's Eve every year in our club rooms. Then in February we have a barbecue in the back yard of our club house. We held an Easter Egg hunt at our club rooms and also enjoyed a visit by a bus load of members from the Manawatu club on Queens Day before they went, suitably fed, watered and lubricated, onto the official reception from the Ambassador in Wellington.

Over the winter months it is business as usual and then the busy time arrives with organising stalls in Wellington Botanic Gardens for Tulip Sunday at the end of September, selling nice hot rookworst, croquettes, salted herrings, rollmops, filled bread rolls, Dutch cakes, tea coffee and flavoured milk. For the last three years we have donated the profits to first of all the Wellington Free Ambulance, secondly the Mary Potter Hospice and last year to the Te Omanga Hospice. The weather last year on Tulip Sunday was one of the worst with rain and hail so the entertainment in the Sound Shell, including The Young Tulip Dancers, had to be cancelled and the crowd we were expecting did not show up. Our Wellington Club lends our Dutch costumes to adults and children participating on Tulip Sunday in the Botanic Gardens as well as cultural days at schools and with other organizations. It is always satisfying to hear of children or adults who like to dress up and promote our Dutch heritage.

The following week, we held Leiden's Ontzet in the Avalon Park Pavilion. It was originally planned to be held in our clubrooms as we have done for many years. However, we were approached by the Ambassador, Mr Arie van der Wiel, to combine it with an event that he was asked to organise and, as usual, we had a very successful evening. At this point we thank all the members of our club as well as non-members who we recruited to run both Tulip Sunday and Leiden's Ontzet this year.

Our club magazine The Double Dutch, is available to everyone who has access to the internet and can be found on the Federation website under the heading Newsletters, where the history of our club can also be found. Our members receive a hard copy which used to be photocopied in black and white but now we have a sponsor who prints it in full colour, every two months. We print off two copies of De Schakel and place them in the club rooms for members to read – especially those who do not have access to the internet. Announcements of coming events and

reports of past events are placed in The Double Dutch – such as a visit from Arjan van der Boon who gave a presentation of the progress of the Foxton Museum project on the last coffee morning for last year, which was the 7th of December.

A new community radio station has started up only about 3 kilometres from our club rooms. A new transmitter has been installed which covers the Hutt Valley, Wainuiomata, Wellington, Porirua and some distance up the Kapiti Coast. Eddie, who is a founder of the station, is also one of the radio presenters and he broadcasts the Dutch Echo Radio Program from 5pm to 6pm on Sundays which is repeated again on Mondays from 2.00pm to 3.00pm. About six months ago, our club was approached by Theo Boekel of Echo Radio for financial aid to keep his program on air so we agreed to sponsor the Wellington Access Radio program for him until the middle of December 2011 when further funding that he has applied for was expected to come through. Eddie, of Hutt Radio also has a Dutch Cabaret program from 5.00pm to 6.00pm on Wednesdays and in addition to that, I have taken on the task of preparing and reading the Dutch news in English from 4.45pm to 5.00pm on Hutt Radio on Sundays, with back up when I need it from Piet Koedijk and Anita Kloezeman.

In conclusion, we extend our sympathy to everyone in Christchurch where the people there have had a terrible time over the last 16 months with the ongoing earthquakes which have caused the awful loss of lives and the destruction of buildings, businesses, homes, livelihoods, lifestyles and peace of mind. Wellington is also an earthquake prone region and one day, we could be in the same situation. Members of our club were very concerned for the victims of this disaster and we decided to help in a small way by donating \$10,000.00 to the Red Cross Earthquake Appeal in Christchurch.

♠ ♣ ♥ ♦ **TUESDAY KLAVERJAS CLUB** ♠ ♣ ♥ ♦

The Klaverjas Club starts again on Tuesday 7th February. Hope you all had a good and restful holiday and that you are now ready to come and play. The doors are open at 10.00am for a cup of coffee or tea and a talk with all your friends you haven't seen for a while.

Play starts at 11.00am. We have a stop for lunch (you bring your own) then we continue with the game – which is usually finished at a little later than 2.00pm.

If anyone is interested to play or to learn, come along – we are a friendly lot and you are most welcome. See you there.

Ann Beyk

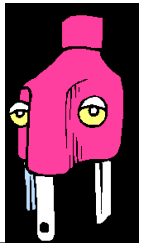
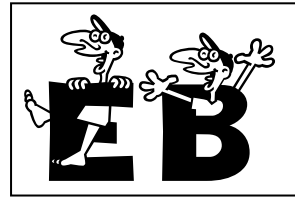
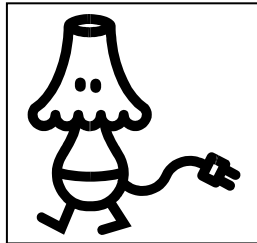
DUTCH PROGRAM ON HUTT RADIO 106.1 FM

Hutt Radio 106.1 FM is now reaching further than just the Hutt Valley. It is licensed to cater for the mature listeners of Greater Wellington. Such non-commercial licences are typically granted to community-based not-for-profit groups with volunteer broadcasters. Our secretary, Dawn, researches and presents a weekly Dutch News



bulletin (in English) at about 4.45pm on Sunday afternoons. This is followed at 5.00pm by “Echo Radio” from NZ’s Dutch Radio Network. “Echo Radio” is repeated on Monday afternoons at 2.00pm. A current Radio Netherlands music series called “Cabaret” (in Dutch) is heard at 5.00pm each Wednesday. Pictured above is Eddie O’Strange who oversees the Dutch programs on Hutt Radio 106.1 FM, sitting in the studio where he and Dawn read the news together live on air, (Dawn sits opposite him).

AMSTERDAM CARS LIMITED
 3/31 BRIDGE STREET, LOWER HUTT
 PHONE (04) 586 0200



ED BOONEN ELECTRICAL LTD.

Registered Electrical Contractors
 Domestic – Industrial – Commercial

Phone (04) 233 – 8338
 Mobile: 0274 425 865

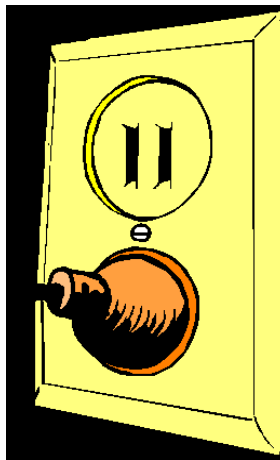
Proprietor: John Gijbers. Fax (04) 586 0201
 E-mail: amsterdamcar@xtra.co.nz

The European Car Specialists.

Alfa, Audi, BMW, Citroen, Fiat, Lancia, Mercedes,
 Peugeot, Renault, Saab, Volkswagon, Volvo.

- Fuel injection specialists
- Electronic tuning
- All mechanical repairs/brakes etc
- Scantool/resetting of fault codes
- Auto electricians
- W.O.F.
- Diesel service
- Engine management specialists
- Regassing of citroen spheres (and bootstruts)
- Panelbeating

QUALITY FOR A FAIR PRICE.



Once again, we thank Harbour City Funeral Home for generously printing The Double Dutch in full colour for us

About Funerals

Informative FREE guide

This beautifully designed 48 page book contains answers to all the immediate questions family and friends will want to know at the time of a funeral. Colour photographs throughout make this easy to read, comprehensive booklet a perfect guide to pre-planning a funeral. Included are sections for recording personal details and funeral preferences that can be retained for future use, making funeral planning easy for your loved ones. **Call us now for a FREE copy of this guide, while stocks are available.**

Call Danny Langstraat on
570 0111

Members of The Funeral Directors Association of New Zealand

Locally Owned Funeral Directors
 Caring in our Community

Wellington, Lower Hutt and Upper Hutt.

LAUGHTER IS BEST MEDICINE

Mijn vrouw gaf een tip voor wat ze wenste voor haar volge verjaardag.
 Ze zei: Ik wil een rode en hij moet van 0 naar 130 gaan in 3 seconden.
 Ik kocht voor haar een weegschaal.

Toen is de ruzie begonnen.....



Arjan van der Boon of the Dutch Connection is pictured left at the Annual National Council Meeting in Palmerston North in November 2011.

Below are a few words from Yolande van der Wetering along with one of the visuals in the 4-page newsletter that she attached. You will see our clubrooms features in it. Yolande mentions the Dutch version of her letter but it is not included here. However, if anyone would like to receive this newsletter via e-mail, please e-mail Dawn: cd.dorresteijn@paradise.net.nz.

Dutch Connection Newsletter - December 2011 (English and Dutch)

OUR COLLECTION IS GROWING FAST

My name is Yolande van de Wetering and I'm the Co-Chair of The Dutch Connection, 'Ons Museum en Cultureel Centrum'. I'm also responsible for the Collection and our Exhibitions - onze Tentoonstellingen. I'd like to tell you a bit more about the fantastic Dutch treasures we've collected over the years. I've also attached the marvellous work that Design Company 3D Creative has done for us. Click and you'll get a glimpse of what our Exhibitions will look like!

(and if you prefer to read this newsletter in het Nederlands - scroll down.)

When everything was still in its infancy and we weren't even called 'The Dutch Connection' yet, the Dutch Museum Trust was already collecting museum pieces. That's exactly how our museum venture started. Treasures, much loved objects that had been carefully selected to be taken as household goods on the long voyage to New Zealand by boat, were threatened to be lost forever when the first generation Dutch Kiwis down sized or passed away. Their children were often not interested to put the typical Dutch furniture, household goods and ornaments in their houses.

When a group of Auckland people noticed that these ended up at auctions or at second hand goods dealers, who sold them at a bargain - 'voor een habbekrats'- they had the brilliant idea to establish a museum and the rest is history! Our Collection now comprises a beautiful set of 18 Dutch National costumes, lovingly made and collected by the late Hans de Wijn. We also have brass objects, Delft Blue vases and tiles, paintings, clocks (a Hindeloopen Klok), embroidery, Friesian skates, a carpet beater (matteklopper) and a lot more!

How are we going to use these treasures in our museum?

A few months ago we commissioned an exhibition design company to make an exhibition design plan for our exhibition areas. Have a look at 3D Creative's attached plans. What do you think about it? We would love to hear from you!

We want to tell the story of the Nederlanders in New Zealand in our museum, the success stories of entrepreneurs, about immigrants like you and me and the Dutch Societies. We also want to organise Gallery Exhibitions to show art produced by Dutch Kiwis and we want to feature travelling Dutch exhibitions.

We hope that this email and especially the Preliminary Exhibition Design Concept will give you a better understanding of what we are trying to do.

If you have any furniture, objects, letters, photos or stories that you'd like to gift to the museum, please send me an email at upsidown@xtra.co.nz

We would like to thank our many sponsors from the bottom of our hearts for their support. Without you we wouldn't be where we are now!

We wish you a Merry Christmas and a very Happy New Year.

Yolande van de Wetering and the Dutch Connection team



Third page out of four of the Preliminary Exhibition Design Concept for the Museum in Foxton.

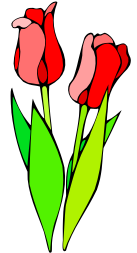


No, this is not “The Last Supper” (not enough people to start off with). They are the delegates from Wanganui, Wairarapa and Wellington (Ann Beyk and Dawn Dorresteijn) at the Annual National Council Meeting in Palmerston North, November 2011.



The Federation Executives elected at the ANCM in Palmerston North. From left to right: Kees Dorresteijn (President); Elly Zentveld (Secretary); Albert Ruijne, Vice President, North Island; Tonny van der Storm (Treasurer); Elly van de Gronde, Vice President, South Island.

NEW ZEALAND NETHERLANDS SOCIETY (Wellington) Inc.
P.O. Box 30-060
LOWER HUTT 5040
NEW ZEALAND



If your address is NOT correct, please send a FREE CHANGE OF ADDRESS CARD (Obtainable from Post Shop/Office) with your correct address to:

New Zealand Netherlands Society (Wellington) Inc., P.O. Box 30-060, Lower Hutt 5040, New Zealand.

The Double Dutch Magazine is produced six times per year and is available to all financial members of the New Zealand Netherlands Society (Wellington) Inc. It is also now available on the Federation of New Zealand Netherlands Society website.

The New Zealand Netherlands Society (Wellington) Inc. is an affiliated member of the Federation of New Zealand Netherlands Societies Incorporated.

Federation of New Zealand Netherlands Societies Website address: www.netherlands-societies.co.nz

For further Information, please contact our club secretary:

Mrs Dawn Dorresteijn, Telephone/Fax/Answerphone (04) 938 2378, or E-mail: cd.dorresteijn@paradise.net.nz

GOODS DELIVERY ADDRESS: 26 De Menech Grove, Avalon, LOWER HUTT

Please do not send any correspondence or parcels to the club rooms.

NEW ZEALAND NETHERLANDS SOCIETY (Wgtn)
Inc.,
P.O. Box 30-060
LOWER HUTT 5040
WELLINGTON

Fee \$35.00 Financial Year 1 April – 31 March

MEMBERSHIP INVOICE

NAME:

ADDRESS:.....

.....

PHONE:.....

ADVERTISING RATES

Please assist the finances of our Club by obtaining Advertisers. If you know of anyone willing to advertise, please contact

Dawn or Kees Dorresteijn Telephone (04) 938 2378

SIZE	MEASUREMENTS	PRICE PER ANNUM
A4	210 X 297mm	\$500 + 15% GST = \$575.00
A5	210 x 148mm	\$300 + 15% GST = \$345.00
A6	105 x 148mm	\$200 + 15% GST = \$230.00
A7	105 x 74mm	\$100 + 15% GST = \$115.00
(One Issue only advert, one quarter of above rates will apply –		
A4 = \$143.75, A5 = \$86.25, A6 = \$57.50, A7 = \$18.75)		

PLEASE PAY PROMPTLY BY 01 APRIL